



St Ives
Football Club

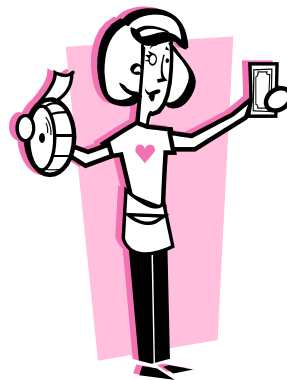
Managers Meeting 2019

Mixed & Girls Juniors (U6 – U11)





THANK YOU !!!!
For
VOLUNTEERING





Agenda



- ▶ Paperwork !
- ▶ The Season
- ▶ Rules of the Game
- ▶ Codes of Conduct
- ▶ Coaching Philosophy
- ▶ The Club
- ▶ Key dates and End of Season
- ▶ Useful Links
- ▶ Training Allocations
- ▶ Kit Pick Up





Paperwork



- ▶ **Working With Children (WWC)**
 - ▶ All Managers, Coaches and Assistants must complete WWC Check and provide SIFC with number
 - ▶ Complete on line and get verified by Services NSW
- ▶ **Registering on FFA registration site**
 - ▶ ALL managers and coaches **MUST** be registered on the FFA system
 - ▶ Follow the registration path either Coaches or Volunteers .There is no charge





The Season



Non-Competition (U6-U11)

▶ Start

- ▶ Mixed – Saturday 6th April
- ▶ Girls – Sunday 7th April

▶ Ends

- ▶ Mixed – Saturday 24th August
- ▶ Girls – Sunday 25th August

▶ No Matches

Middle week of school
Holidays in April and July

More info can be found in the event calendar of NSFA
www.nsfa.asn.au





Rules of the Game



U6 & U7

- ▶ Player Numbers 4v4
- ▶ Ball Size 3
- ▶ Goalkeeper No
- ▶ Playing Time 2x20min
- ▶ Half Time Break 5min
- ▶ Throw-in/Kick-in - Kick-in
- ▶ Opponent > 5m away on kick in
- ▶ Offside No
- ▶ Corners No
- ▶ Penalties No
- ▶ With goal kick players move back to half way
- ▶ Field Size 30x20m

On the Day

- ▶ The Squad is of size 8 to 11 players
- ▶ Coach/Manager creates two teams of 4 players plus subs
 - ▶ Broadly on strength basis (A & B teams)
- ▶ Each team play their match
- ▶ Manager notes scores and creates and aggregate score
 - ▶ [Then enters this on the system.](#)





Rules of the Game



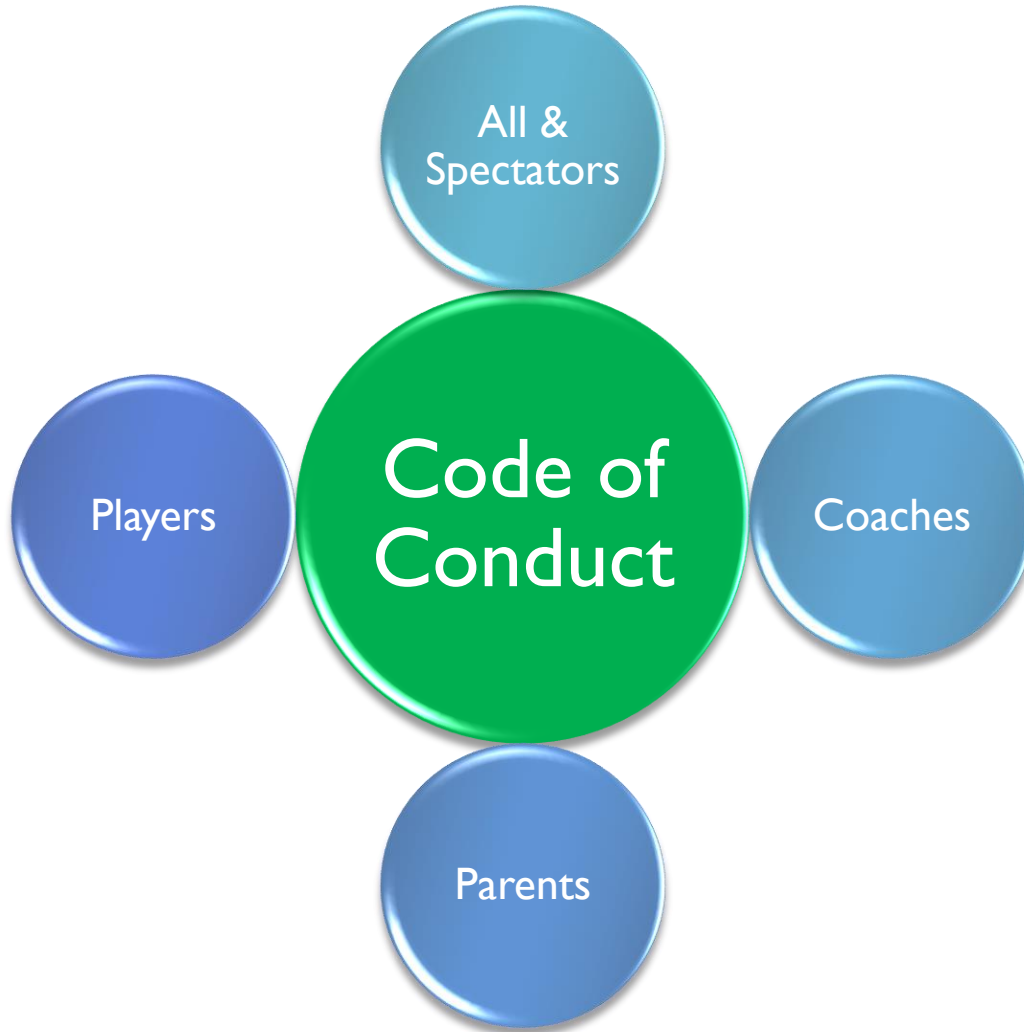
U8 & U9

- ▶ Player Numbers 7v7
- ▶ Ball Size 3
- ▶ Goalkeeper Yes
- ▶ Playing Time 2x20min
- ▶ Half Time Break 5min
- ▶ Throw-in/Kick-in Throw In
- ▶ Offside No
- ▶ Corners Yes
- ▶ Penalties Yes
- ▶ Goal Kicks – opponents on halfway
- ▶ Opponent > 5m away
- ▶ Field Size 40x30m

U10 – U11

- ▶ Player Numbers 9v9
- ▶ Ball Size 4
- ▶ Goalkeeper Yes
- ▶ Playing Time 2x25min
- ▶ Half Time Break 5min
- ▶ Throw-in/Kick-in Throw-in
- ▶ Offside No
- ▶ Corners Yes
- ▶ Penalties Yes
- ▶ Goal Kicks – opponents on halfw
- ▶ Opponent > 5m away
- ▶ Field Size 60x40m







Code of Conduct



▶ Coaches

- ▶ Aside from injury, each junior player should be on the field for at least half the game time. All players deserve equal playing and training time, regardless of their ability.
- ▶ Be reasonable in your demands on players' time, energy and enthusiasm.
- ▶ Any physical contact with a young player should be appropriate to the situation and necessary for their development.
- ▶ Ensure that the time players spend with you is a positive experience. All young players are deserving of equal attention and opportunities.
- ▶ Ensure that equipment and facilities meet safety standards and are appropriate to the age, maturity and ability of all players.
- ▶ Show concern and caution toward sick and injured players. Follow the advice of a physician when determining whether an injured player is ready to recommence training or competition.





Code of Conduct



▶ Coaches

- ▶ Aside from injury, each player should play for at least half the game time. All players should be given the opportunity to use their skills and talents to the best of their ability.
- ▶ Be fair and honest. Do not give false praise or criticism.
- ▶ All comments should be supportive, not derisive or sarcastic. Do not use profanity or inappropriate language. Do not use profanity or inappropriate language. Do not use profanity or inappropriate language.
- ▶ Ensure that all young players are given the opportunity to play. All young players are given the opportunity to play.
- ▶ Ensure that all young players are given the opportunity to play. All young players are given the opportunity to play.
- ▶ Show concern for the welfare of all players. Follow the advice of a physician when determining if a player is ready to recommence training or competition.

Some Pointers

If you are shouting you are not doing it right

Comments should all be supportive, not derisive

Support Referees Decisions

Cheer achievement, no matter how small





Code of Conduct



**You are
AMBASSADORS
for
St Ives FC**

Your actions reflect on the Club's reputation

Kids & Other Parents look towards your
example.





Philosophy

Coaching

Courses





Coaching Philosophy



MiniRoos Football - it's all about participation, skill development and fun

- ▶ Coaches should encourage players to pass and dribble rather than kick up-field or shoot for goal from anywhere.
- ▶ Encourage spacing and passing, using all the field
- ▶ Introduce triangle formulations to show options available
- ▶ Encourage confidence with the ball through one on ones and ball retention
- ▶ Encourage running off the ball to support team members

- ▶ Always be positive and remark on good actions, not bad actions
- ▶ Ensure all children have fair opportunity at training and matches
- ▶ Coaches must not enter the field of play.
- ▶ It is not permitted to have a player permanently stationed immediately in front of the goalmouth as an attacker or defender.





Coaching Philosophy



MiniRoos Football - it's all about participation, skill development and fun

- ▶ Coaches should encourage players to pass rather than kick up-field or shoot for goal from anywhere
- ▶ Encourage spacing
- ▶ Introduce touch
- ▶ Encourage communication
- ▶ Encourage running
- ▶ Always be positive
- ▶ Ensure all children participate
- ▶ Coaches must not be over-zealous
- ▶ Parents must not stand in front of the goal
- ▶ It is not permitted to have a player permanently stationed immediately in front of the goalmouth as an attacker or defender.

!!! FUN !!!

Smiling Faces at end of Match
Regardless of result

Focus on Participation and Execution
rather than Results





Coaching courses



- ▶ Grassroots (U6 – U8)
- ▶ Junior (U8 – U11)
- ▶ Check Club's or NSFA website for schedule of other courses
- ▶ Club will cover costs on proof of attendance

Are you coaching this year ?

Or

Are you an U6 Parent ?

Get a **HEAD START** on the rules & coaching techniques

at the

Grassroots Course for coaches & U6 Parents

Three choices for attendance :

Friday 21st March

Monday 24th march

Saturday 29th March

[Click for more details and registration](#)



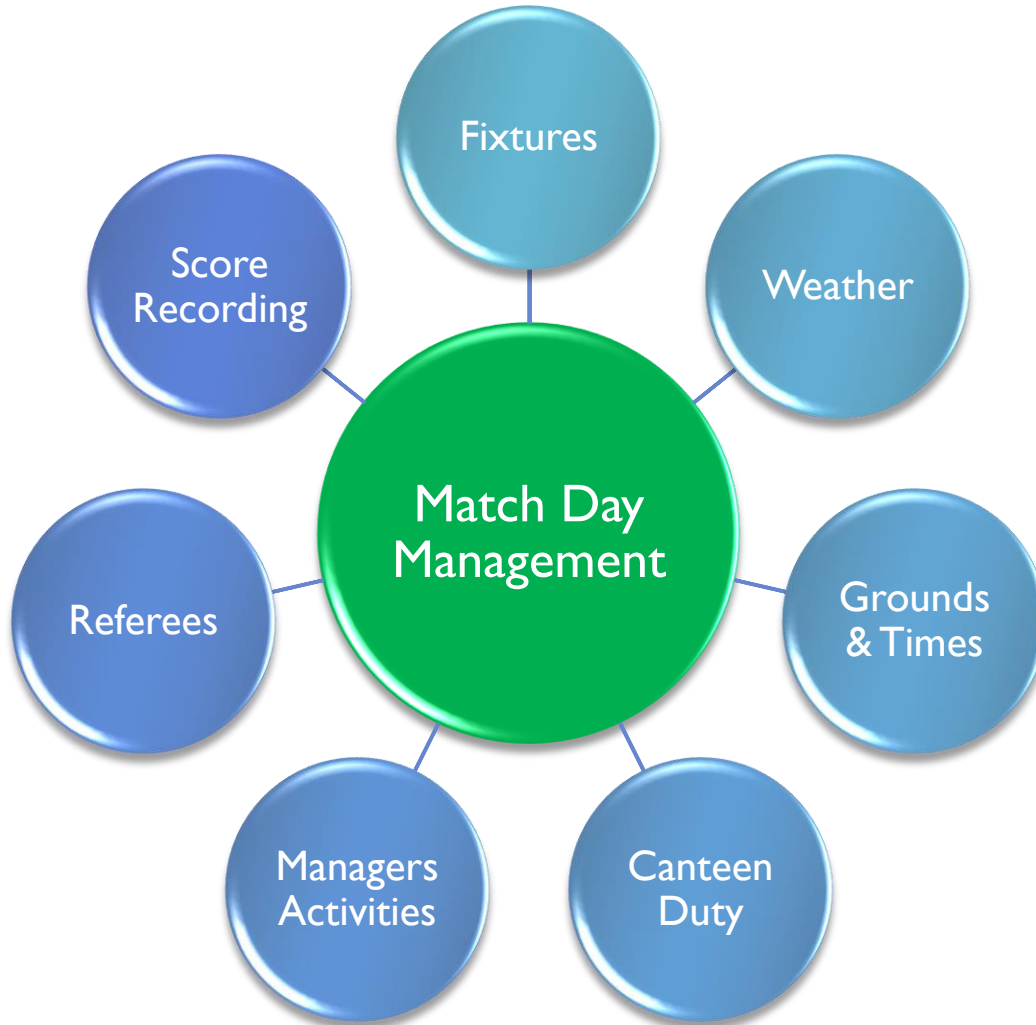


Set Up

Match Card
Management

Match
Preparation







Match Day Management



▶ Fixtures

- ▶ Click the link on our website –Matchday tab
Draw

- ▶ Usually first 3 to 5 weeks draw, then results reviewed and subsequent 5 weeks drawn
- ▶ Between draw shuffles please be patient, may be some late notice

▶ Wet Weather (applicable for Training as well)

- ▶ Weekend games decided by Council at 3pm Friday
- ▶ Found of our website, council and NSFA websites
- ▶ Focused on preserving grounds
- ▶ Training availability also governed by council





Match Day Management



▶ MiniRoos Centres

- ▶ Bales Park, Sydney Street, Northbridge
- ▶ Blackman Oval off Wood Street, Lane Cove
- ▶ Foxglove Oval Foxglove Road, Mt Colah, Hornsby
- ▶ Karuah Oval Karuah Street, Turramurra
- ▶ Regimental Oval Cnr, Lorne Ave & Pacific Highway, Killara
- ▶ Toolang Oval Cnr Warrimoo Ave & Toolang St, St Ives
- ▶ Tunks Oval Lower Cliff Avenue, North Sydney

▶ Approximate Start times

- ▶ U6 – 8:30 to 10:00
- ▶ U7 – 9:15 to 11:30
- ▶ U8 & U9 – 8:30 to 12:20
- ▶ U10 & U11 – 8:30 to 12:00





Match Day Management



▶ Canteen Duties

▶ U6 & U7

- ▶ You will be rostered on to man the Toolang Canteen for the **WHOLE** morning (not just the time you are playing) 8.15am-11.15pm
- ▶ You should have no more than two duties across the season
- ▶ The roster will be worked out when the draw is available.
- ▶ Managers must ensure that a fair roster of **ALL** parents is put in place
- ▶ Operating Procedures for the Toolang Canteen can be found on the Club's web site





Match Day Management



▶ Managers

- ▶ Ensure all players know next fixture time & location
- ▶ Manage roster half time refreshments and shirt cleaning
- ▶ Keep a register of availability
- ▶ Work with Coach to establish teams for the day
- ▶ Be liaison person with Opposition manager & MiniRoos Ground Controller (when required)





Match Day Management



- ▶ **Referees (Game Leaders) Non-Comp**
 - ▶ These are parent volunteers (or allocated by Manager !)
 - ▶ May instruct both teams on the rules of the game but no coaching – **rules are in your kit**
 - ▶ Please be professional
 - ▶ Wandering around the pitch with a cup of coffee in you hand is not a good look.
 - ▶ Keep up with the action
 - ▶ Make your instructions clear and understandable
 - ▶ Remember they are for the benefit of players AND spectators





Match Day Management



- ▶ **Coaches**
 - ▶ Positive Comments only
 - ▶ Manage substitutions fairly
 - ▶ Do not enter the pitch
 - ▶ Support the Referee
 - ▶ Don't stand behind the goal areas





Match Day Management



Match Cards U6 – U11

- ▶ Managers responsibility
- ▶ Enter before end of the weekend
- ▶ Go to Team Managers portal
- ▶ Take [Match Results] option and follow the prompts
- ▶ If the two competing teams enter different results then an email will be sent to you.







The Club



Age Co-Ordinators

- ▶ U6 - Angelo Elias
- ▶ U7 - Julie Samowitz
- ▶ U8 - Chris King
- ▶ U9 - Vacant
- ▶ U10 - Mark Hall
- ▶ U11 - Mark Hall
- ▶ Special Needs – Rob Fry

Communications

- ▶ Players & Parents to Manager
- ▶ Manager to Age Co-Ordinator
- ▶ Age Co-Ordinator to Committee
- ▶ Committee (Secretary) to NSFA

- ▶ Complaints can be directed directly at the committee if required.

- ▶ See our website or facebook page for any additional up to date information





Key Dates & End of Season



Key Dates

- ▶ **Gala Day**
 - ▶ 24th and 25th of August
 - ▶ Marks the end of the season
 - ▶ Mini competition
- ▶ **Social Function**
 - ▶ (Clubhouse)

End of Season

- ▶ **Manager and/or Coach**
 - ▶ Monday 9th September
 - ▶ Responsible to get game shirts from **all** players
 - ▶ **We do not want dlibs and drabs back from individual players.**
 - ▶ Return all kit in clean condition





Useful Links



- ▶ Club Website
 - ▶ www.stivesfootball.com.au
- ▶ NSFA Website
 - ▶ <http://nsfa.asn.au/>
- ▶ Council Website
 - ▶ www.kmc.nsw.gov.au
- ▶ MiniRoos Website
 - ▶ www.minroos.com.au
- ▶ Managers Login
 - ▶ Team official Tab
 - ▶ <https://nsfastves.myclubmate.com.au/teammanagers/login.asp>

